

WLPCS
Geometry

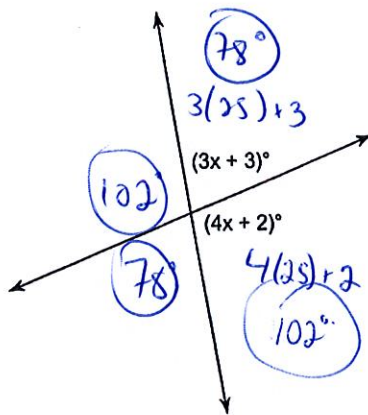
Name: ANSWER KEY

Date: _____

Per.: _____

Unit 1 Review – Day 2

1.) Find the measure of each angle in the diagram.



$$3x + 3 + 4x + 2 = 180$$

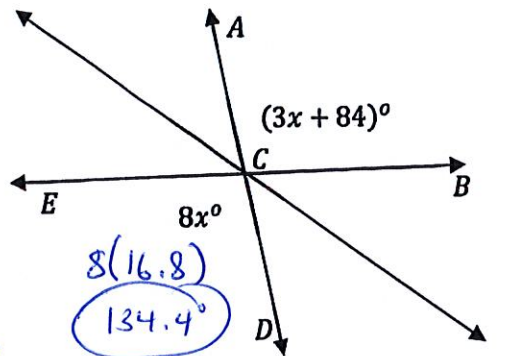
$$7x + 5 = 180$$

$$7x = 175$$

$$x = 25$$

* vertical angles are congruent
* linear pairs sum to 180° (supplementary)

2.) In the figure below, find $m\angle ECD$.

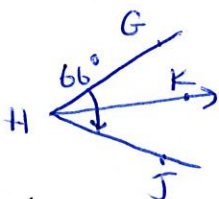


$$8x = 3x + 84$$

$$5x = 84$$

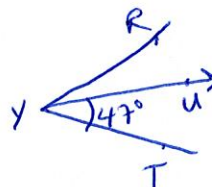
$$x = 16.8$$

3.) $\angle GHJ$ has been bisected by \overline{HK} .
If $\angle GHJ = 66^\circ$, then find $\angle KHG$.



$$m\angle KHG = 33^\circ$$

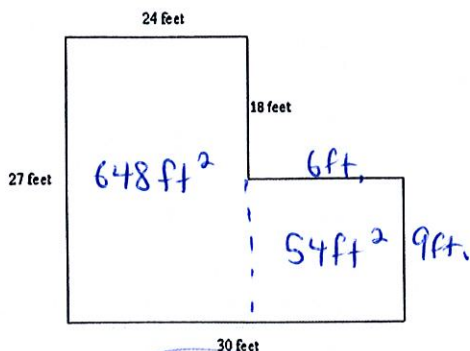
4.) $\angle RYT$ has been bisected by \overline{YU} .
If $\angle UYT = 47^\circ$, then find $\angle RYU$.



$$m\angle RYU = 47^\circ$$

For each shape below, find a.) the perimeter and b.) the area.

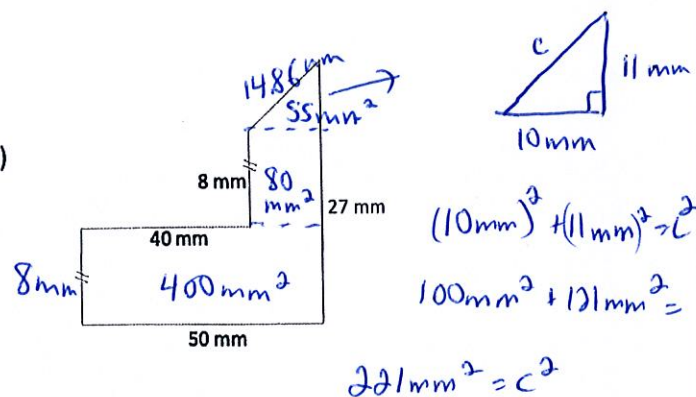
5.)



a.) 114 feet

b.) 702 ft^2

12.)



a.) 147.86 mm

b.) 535 mm^2